

CONTACT 502A

Wireless Microphone System

OPERATING MANUAL AND USER GUIDE



www.wharfedalepro.com

IMPORTANT WARNINGS & SAFETY INSTRUCTIONS

1. Please read and retain these safety instructions.
2. Heed all warnings in the operating instructions and on the appliance.
3. Do not use this apparatus near water or moisture.
4. Clean only with a dry cloth.
5. Do not install near sources of heat such as radiators, heat registers, stoves or other apparatus that produce heat.
6. Refer all servicing to authorised personnel.
7. There are no user serviceable parts inside this product. Users should not attempt to service this product. Warranty nullification could result if this is attempted.
8. Servicing is required when the apparatus has been damaged in any way including: Impact damage, power cord/supply damage, liquid spillages, small objects falling into the unit or exposure to moisture. In addition please refer to authorised service personnel if the apparatus is not operating normally.
9. To completely disconnect this equipment from the AC mains disconnect the power plug from the AC receptacle.
10. To prevent fire never place the unit near any naked flame such as a candle.
11. Do not defeat the purpose of the polarized or grounding type plug. A polarized plug has two blades with one wider than the other. A grounding type plug has two blades and a third grounding prong. The wide blade or the third prong are there for your safety. If the plug does not fit into your outlet, consult an electrician for replacement of the obsolete outlet.
12. USING AMPLIFIERS – In order to avoid damage to drivers and other equipment, it is advisable to establish and follow a routine for powering up and powering down a sound system. With all system components connected, turn on source equipment (mixers, signal processors, record and playback

units, etc.) BEFORE powering up amplifiers. Transient voltages from powering up source equipment can damage speakers if amplifiers are already turned on. Make sure that amplifier volumes are set to their minimum settings and power up any system amplifiers LAST. It is recommended that all system components be allowed to stabilize for several seconds before any source signals are introduced or level setting adjustments are made. Similarly, when shutting systems down, turn all amplifiers off first, before powering down any other system components.

13. **CABLES** – Do not use shielded or microphone cables for connection between amplifiers and speakers. Use only approved speaker cables with proper connectors.
14. **RIGGING – SUSPENDING – MOUNTING** – Rigging, suspending and mounting of speaker systems can expose members of the public to serious health risks and even death. **UNDER NO CIRCUMSTANCES ATTEMPT TO RIG, SUSPEND OR OTHERWISE MOUNT SOUND REINFORCEMENT PRODUCTS UNLESS YOU ARE FULLY QUALIFIED AND CERTIFIED TO DO SO BY RELEVANT LOCAL, STATE AND NATIONAL AUTHORITIES. ALL RELEVANT SAFETY REGULATIONS MUST BE FOLLOWED. IF YOU ARE NOT PROPERLY QUALIFIED OR DO NOT KNOW OF PERTINENT REGULATIONS, CONSULT QUALIFIED PERSONNEL FOR ADVICE.**
15. **CAUTION** – Professional sound reinforcement systems are capable of generating very high sound pressure levels. Take care with placement and operation to avoid exposure to excessive volume levels. Permanent hearing damage can result when operated to extreme levels.

TABLE OF CONTENTS

Important Warnings and Safety Instructions	1
Introduction	4
Overview	4
Features and contents	5
Setting up the receiver.....	8
Receiver operation	9
Receiver controls.....	9
Placement of the Receiver	10
Notice	11
Names and Functions.....	11
Battery installation	12
Specification	13
Warranty.....	14

INTRODUCTION

Wharfedale Contact 502A Wireless microphones are the result of many years of experience in the use, design and manufacturing of professional audio products. We take great pride in engineering and building every Wharfedale Pro microphone and wish to thank you for entrusting us with your sound.

Please take a few minutes to read this manual completely in order to ensure that you get the most out of your Contact 502A Wireless microphone.

CONTACT 502A OVERVIEW:

Thank you for selecting the Contact 502A dual-channel UHF wireless microphone system. This system can receive signals from two microphones simultaneously. It uses digital circuitry to distinguish the intensity of the signals received by the two antennas.

Each channel has a volume control, function buttons and is controlled by a dedicated CPU. An LED display Shows information for each channel. Function buttons include: GROUP, SCAN and SYNC.

The SYNC button allows the user to quickly lock the receiving and transmitting frequencies of the microphone transmitter system. The Contact 502A can seamlessly change frequencies quickly and select compatible channels without the need to mute mixer channels or output devices. The Contact 502A is packaged in a 1U rack mount chassis.

FEATURES

- Antenna diversity system with 2 antennas
- High sensitivity handheld dynamic microphones with integrated transmitters
- Infrared link for automatic synchronisation of transmitters and receiver
- Automatic scanning for interference free channels
- Intelligent battery status display for each channel
- Up to 8 hours of continuous use from 2x AA batteries
- Automatic microphone off in low battery conditions
- Worldwide multi-voltage switching power supply

CONTENTS

- 1 x Wireless receiver
- 2 x Antennas
- 2 x Dynamic microphones with built in transmitters
- 2 x 1/4" jack cables
- 1 x Power supply
- 1 x User manual
- 4 x AA batteries
- 1 x Rack mount kit

FRONT PANEL OF THE DUAL CHANNEL RECEIVER:

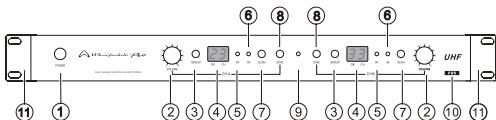


Fig.1

- 1) POWER: Toggles the power on and off.
- 2) VOLUME CONTROL (Channels A & B): Sets the level for each channel.
- 3) GROUP (Channels A & B): Create groups of microphones, which is useful when many microphones are used simultaneously.
- 4) LED (Channels A & B): Displays the GROUP and CHANNEL assignment for each channel.
- 5) RF LED (Channels A & B): Indicates that RF signal is present and locked.
- 6) AF LED (Channels A & B): Indicates that audio signal is present.
- 7) SCAN (Channels A & B): Initiates scanning for a new channel. Automatically scans and locks on to compatible interference free channels.
- 8) SYNC (Channels A & B): Synchronises the transmitter to the receiver.
- 9) IR SYNC receiver: Receives the IR SYNC signal from the base of the transmitter.
- 10) Receiver Frequency Codes. (See page 14, III Frequency Range Code Table)
- 11) Rack ears: Used to fix the receiver to a standard 19" equipment rack.

REAR PANEL OF THE DUAL CHANNEL RECEIVER:

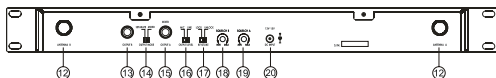


Fig.2

- 12) Antenna Connectors
- 13) Output B: 1/4" unbalanced jack output connector for CH B.
- 14) OUTPUT MODE Switch: Use "MIXED" to output both microphones from output A. Use "SEPARATE" to output each microphone individually.
- 15) Output A: 1/4" unbalanced jack output connector for CH A or the mixed signal.
- 16) Output Level Switch: Use "MIC" when connected to microphone inputs (-14dBv/ 100Ω). Use "LINE" when connected to line level inputs (+4dBv/ 5kΩ).
- 17) LOCK: When engaged all front panel buttons are disabled. The power switch will continue to function even when the unit is locked.
- 18) SQUELCH B: Adjusts the sensitivity of Channel B to reduce noise.
- 19) SQUELCH A: Adjusts the sensitivity of Channel A to reduce noise.
- 20) DC Power receptacle: For connecting the external 13V DC power supply (centre pin positive).

SETTING UP THE RECEIVER

Output connection:

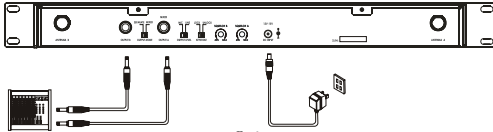


Fig.3

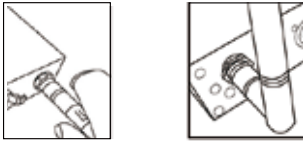


Fig.3a

1. Install the two antennas on the rear panel as shown in Fig.3a.
2. Connect the power supply as shown in Fig.3. (Caution: Ensure the power supply has the correct rating for your local AC supply)
3. Connect audio leads from the output of each channel to an input on a mixer or powered speaker. When the output cable is connected to an auxiliary or line input the "OUTPUT LEVEL" switch (16) should be set to the "LINE" position. When the output cable is connected to a microphone input of a mixer or powered loudspeaker the "OUTPUT LEVEL" switch should be set to the "MIC" position. If the "LEVEL" switch is set in the wrong position the gain structure will be wrong and can cause excessive hiss or distortion.
4. When the "OUTPUT MODE" switch (14) is set to "MIXED" only connect to "OUTPUT A" (13). There is no output from "OUTPUT B" in this mode.

RECEIVER OPERATION:

1. Before turning on the receiver, make certain the transmitter is off. Also ensure that the volume for CH A and CH B are set to minimum. Ensure that your output devices are muted or set to the lowest possible level before turning on the Contact 502A, then hold down the power button of the receiver until the LED displays illuminate.
2. Turn on the wireless microphone. The RF indicator light of the corresponding channel will illuminate. Turn the volume of the receiver to 12 o'clock. Raise the level of your output devices and then speak into the microphone. The AF indicator LED on the receiver will illuminate with the volume level.

RECEIVER CONTROLS

1. Upon power up the LED fully illuminates and displays the GROUP and CHANNEL information.
2. GROUP function: Press the GROUP button once. The group number will flash; it shows that the GROUP is pending. Press the Group button to increment the GROUP numbers from 1-9. Stop at the desired number to assign to the group.
3. CHANNEL function: press the SCAN button once. The channel numbers flash showing the channel is pending. Press it again to increment the numbers. Stop at the desired number to assign the channel.
4. SYNC function: Press the SYNC button once and move the powered-up microphone about 30 cm in front of the receiver. Point the power indicator of the microphone at the transmitting window of the receiver. When the channel locks, the LCD will display the same group and channel as the receiver. Synchronisation is now complete.

5. LOCK and UNLOCK: If you wish to lock the controls on the front panel to avoid accidental adjustments, set the "LOCK/UNLOCK" switch (17) to the "LOCK" position. All the buttons will be disabled except the "POWER" button. To enable the front panel controls slide the switch to the "UNLOCK" position.
6. SQUELCH: There are two adjustable SQUELCH controls on the rear panel of the receiver. The SQUELCH value of the A and B channel should be adjusted to improve sound quality, and can be used to minimise unwanted hiss or distortion.

PLACEMENT OF THE RECEIVER

1. In order to achieve the best results, the receiver should have a minimum 1 metre clearance on all sides from the floor or walls. The distance between the transmitter and antenna should be over 1 metre, as in Fig. 4. The receiver should be kept away from sources of possible interference.

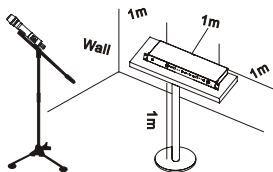


Fig.4

2. The receiver can be mounted in a EIA standard 19 inch (482.6mm) rack. Use the supplied rack ears as per Fig. 5.

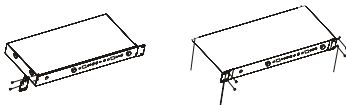


Fig.5

NOTICE:

- The position of the antenna will affect the reception, so minimise the distance between the microphone and receiver where possible.
- Several sets of wireless microphones can be used simultaneously with this system. Please consult your dealer or distributor for correct frequencies.

NAMES AND FUNCTIONS:

1. Pop shield: Protects the microphone capsule from damage and reduces the "pop" noise (from "P's" and "B's") as well as wind noise.
2. Barrel: Contains the transmitter circuitry.
3. Battery Compartment: houses two AA type batteries.
4. Transmitter codes.
5. LCD panel: Displays the transmitter information.
6. SYNC signal IR transmitter: transmits SYNC information, self-adjusts frequency and transmitting power.

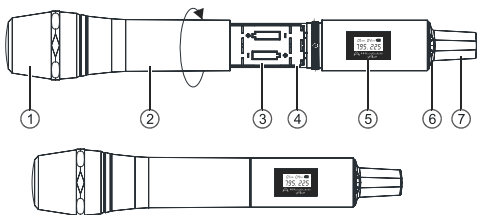


Fig.6

BATTERY INSTALLATION

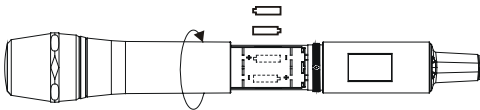
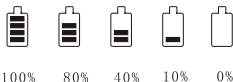


Fig.7

1. Unscrew the upper part (2) of the microphone in a counter-clockwise direction
2. Install the two AA batteries according to the polarity as shown in the battery compartment, and screw the upper part tight.



3. Operating Functions of the LCD Panel
 - 1) When the power switch is in position 1, the LCD displays all the content, then displays the power value for a second.
 - 2) Battery Status: When the battery level is 10%, batteries should be replaced. When the battery level is 0%, the LCD battery level and the power supply indicator will flash to remind you again to change batteries. If the battery level is too low for a long time, the LCD will display "Po OFF" and turn off the microphone.
4. Turnoff:
 - 1) When the power supply is switched to "O", the LCD will display "Po OFF", which indicates it will turn off soon, and then the power supply will automatically shut down.



NOTE: When the microphone is not in use, remember to turn off the power supply. If you will not use the microphone for a long time, remove the batteries to avoid damage from battery leakage. If you are using rechargeable batteries, remove the batteries and charge them in their charger.

SPECIFICATIONS

I. Receiver

Cabinet Size	EIA Standard 1U
Channels	Two Channel
Receiving Manner	Automatic via Antenna
Oscillation Mode	PLL (Phase Locked Loop), frequency compounded.
Carrier Frequency Range	UHF 529~865MHz
Stability	$\pm 0.005\%$ (-10~50 °C)
Bandwidth	13MHz
Sensitivity	4 μ V (S/N>12dB 25KHz deviation)
Frequency Interval	250KHz
Switched Frequencies	50 channel
S/N	≤ 90 dB(A)
T.H.D.	< 1% at 1KHz
Frequency Response	60 - 15KHz (± 3 dB)
Functional Distance	80 meters Line of Sight Note: Actual range depends on RF signal absorption, reflection and interference.
Max. Output Level	-14dBV/5k Ω
Output Jack	6.3mm (1/4") Phone jack
AC Power Supply	External 110-220VAC
DC Power Supply	0.5A, 13 - 15VDC
Dimensions (mm)	420 x 195 x 44mm

II. Transmitter

Oscillation Mode	PLL (Phase Locked Loop)
Carrier frequency	frequency Compounded UHF 529 ~ 865MHz
Frequency Stability	$\pm 0.005\%$ (-10 ~ 50 °C)
Bandwidth	13MHz
Frequency Adjustment	Automatic Channel setting
Output Power	> 10dBm (adjustable)
Harmonic radiation	< 55 dB(c)
Max. adjustment range	$\pm 48\text{kHz}$
Max. Input SPL	140dB
Battery	AA battery x 2

III. Frequency Range Code Table.

Receiving Frequency Ranges		Transmitting Frequency Ranges		Transmitting Frequency Ranges	
Code	Frequency Range(MHz)	Code	Frequency Range(MHz)	Code	Frequency Range(MHz)
F1	529 – 596	F1A	529 – 542	F1B	583 – 596
F2	659 – 696	F2A	659 – 662	F2B	683 – 696
F3	713 – 752	F3A	713 – 726	F3B	740 – 752
F4	780 – 806	F4A	780 – 793	F4B	793 – 806
F5	838 – 865	F5A	838 – 841	F5B	852 – 865

WHARFEDALE PRO LIMITED WARRANTY

Wharfedale Pro Contact 502A Wireless Microphone Systems are warranted of manufacturing or material defects for a period of one year from the original date of purchase. In the event of malfunction, contact your authorised Wharfedale Pro dealer or distributor for information.

* Be aware that warranty details may differ from country to country. Contact your dealers or distributor for information. These terms do not infringe your statutory rights.



Wharfedale Professional
IAG House, 13/14 Glebe Road, Huntingdon, Cambridgeshire,
PE29 7DL, UK
www.wharfedalepro.com

Wharfedale Professional reserves the right to alter
or improve specifications without notice.
All rights reserved © 2010 Wharfedale Pro.
Wharfedale Pro is a member of the IAG Group.